



To subscribe to the News and Notes visit [www.fsc.org/subscribe-newsletter.html](http://www.fsc.org/subscribe-newsletter.html)

## IN THIS ISSUE

- 2 FSC in Figures
- 2 Current FSC Public Consultations
- 3 New FSC members
- 4 FSC Board of Directors Election 2008 - Interview candidates online
- 4 Global Paper Forum reveals demand for FSC paper is on the rise
- 5 The third FSC market survey is currently online
- 5 More information on certificate holders now online
- 6 Space technology offers cost effective services for FSC forest management
- 7 **Resource Section**

## JOB OPPORTUNITIES AT FSC

There are a number of job openings at FSC.

If you would like to join our multi-cultural team in Bonn, visit [www.fsc.org/jobs.html](http://www.fsc.org/jobs.html)

## FSC'S GENERAL ASSEMBLY – ONLY THREE MONTH TO GO: REGISTER NOW !!

It is only 3 more months until the FSC General Assembly – so make sure you do not miss this incredible event – a gathering of FSC members and supporters all coming together to celebrate 15 years of success.

Many members and supporters have already registered to attend and FSC expects attendance from 400 participants from over 50 different countries.

Preparations for a successful event from 3 – 7 November 2008 in Cape Town, South Africa, are already underway and we invite you to be part of this global gathering.

This is the first time the General Assembly will be held in Africa and it promises to further strengthen FSC's presence on the continent and also strengthen the number of local supporters – both from the economic sector as well as from social and environmental interest groups.



Participate in the General Assembly as a voting member. Be part of the highest decision-making body in FSC. © FSC

Business leaders, environmental organizations and representatives from communities will discuss, debate and decide on key issues. Some of the topics include expanding FSC certification for small-scale forest owners worldwide as well as the role of FSC certification in combating climate change. Furthermore, the members will review the FSC Principles and Criteria.

If you would like to participate in the General Assembly as a voting member, please be sure to submit your membership application by the deadline of August 31, 2008 to ensure timely approval.

If we can help in anyway with your preparation of your submission for membership, please do not hesitate to contact us. Please note that membership applications received after August 31 may not be approved in time for the upcoming General Assembly.

For registration and up to date information about the 2008 General Assembly please visit the website at: [www.fsc.org/general-assembly-2008.html](http://www.fsc.org/general-assembly-2008.html).



Subscribe at [www.fsc.org/subscribe-newsletter.html](http://www.fsc.org/subscribe-newsletter.html)

## FSC IN FIGURES

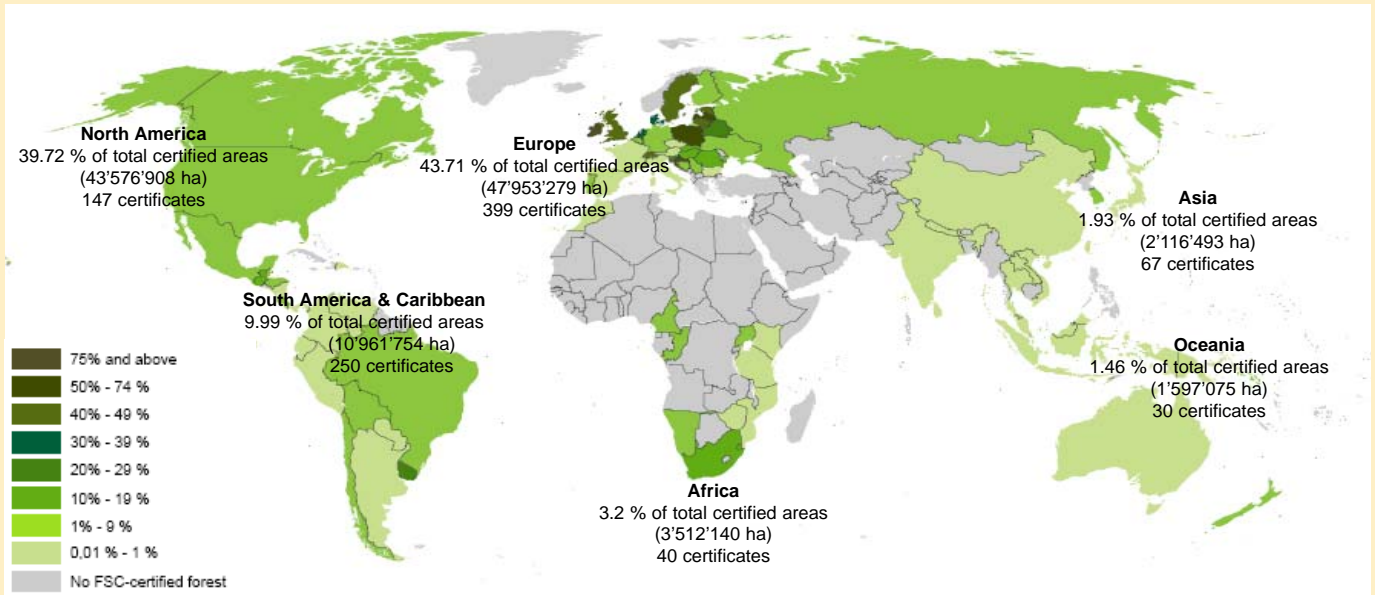
Information as of August 31<sup>st</sup>, 2008

**Total certified area: 109'717'649 ha**

Total Forest Management certificates: 933

Total Chain of Costody certificates: 10'119

Currently FSC has Forest Management and Chain of Costody certificates in 81 countries.



Source: Map FSC Denmark 01/01/08

For quarterly updates on FSC charts and figures and for the FSC market information pack, visit [www.fsc.org/facts-figures.html](http://www.fsc.org/facts-figures.html).

## CURRENT FSC PUBLIC CONSULTATIONS

### Approved Documents

#### **FSC-PRO-60-002 (Version 1-0) FSC Controlled Wood Risk Assessments by FSC accredited national initiatives, national and regional offices**

The Controlled Wood framework has made new grounds with the approval of a new procedure (FSC-PRO-60-002 V1-0) for National Initiatives and Regional Offices. It governs how to develop an FSC Controlled Wood risk assessment for endorsement by FSC. The procedure aims to facilitate the implementation of the Controlled Wood standard (FSC-STD-40-005 V2-1).

The FSC Executive Director approved the procedure on July 23rd, 2008 which replaces the guidance document FSC-GUI-60-002. The procedure includes requirements on content and process.

An FSC approved national or regional risk assessment will become mandatory for all companies sourcing wood from that country or district.

For further questions please contact Pina Gervassi: [p.gervassi@fsc.org](mailto:p.gervassi@fsc.org).

### ASI SURVEILLANCE AUDITS

For up-to-date information on ASI surveillance audits and public summaries visit the ASI website at [www.accreditation-services.com/InformationCenter.htm](http://www.accreditation-services.com/InformationCenter.htm).

## NEW FSC MEMBERS

**Total FSC Members as of July 29<sup>th</sup> 2008: 784**

Economic - North	170	Economic - South	140
Environmental - North	126	Environmental - South	200
Social - North	61	Social - South	87

Name/Company/Org.	Representative	Country	Chamber	Subchamber
Bouwunie Schrijnwerkers & Interieurbouwers	Mr. Geert Ramaekers	Belgium	ECONOMIC	NORTH
CEPI – Confederation of European Paper Industries aisbl	Mr. Bernard de Galember	Belgium	ECONOMIC	NORTH
CFB – Cámara Forestal de Bolivia	Mr. Pedro Colanzi Serrate	Bolivia	ECONOMIC	SOUTH
FOCERFO - Fondo para la Certificación Forestal Voluntaria	Mr. Fernando Velarde	Bolivia	SOCIAL	SOUTH
Mrs. Selma Basagic		Bosnia and Herzegovina	ECONOMIC	SOUTH
Mr. Smail Karovic		Bosnia and Herzegovina	ECONOMIC	SOUTH
IPEF – Forestry Science and Research Institute	Mr. Paulo Henrique Müller da Silva	Brazil	ECONOMIC	SOUTH
Mr. Jean-Louis Abbe Bikele		Cameroun	ENVIRONMENTAL	SOUTH
Mr. Celestin Armand Asseng Ze		Cameroun	SOCIAL	SOUTH
Mr. Jean Baptiste Ngodo Melingui		Cameroun	ENVIRONMENTAL	SOUTH
Mr. François-Eugene Owono Owono		Cameroun	SOCIAL	SOUTH
Mr. Athanase Didier Tsanga Ada		Cameroun	SOCIAL	SOUTH
Sr. Andrés Venegas		Chile	SOCIAL	SOUTH
Ing. Nikola Zovko		Croatia / Bosnia and Herzegovina	ENVIRONMENTAL	SOUTH
ASOKANUS – Asociación Artesanal Agroforestal Kanus	Mr. Carlos Chup	Ecuador	SOCIAL	SOUTH
Ms Deborah Sue		Fiji, Island	ENVIRONMENTAL	SOUTH
Ms. Sylvie Rachel Ikabangoye		Gabon	ENVIRONMENTAL	SOUTH
Dr. Marinella Giacobbe		Italy	ECONOMIC	NORTH
WWF European Policy Office, Italian Branch	Ms. Nora Berrahmouni	Italy	ENVIRONMENTAL	NORTH
Mr. Truman Bradley		New Zealand / Fiji	ECONOMIC	NORTH
Dr. Maria Tysiachniouk		Russia	SOCIAL	SOUTH
Mr. Elie Hakizumwami		Rwanda / Cameroun	ENVIRONMENTAL	SOUTH
Mr. Doni Blagojevic		Serbia / Bosnia and Herzegovina	ECONOMIC	SOUTH
Mr. Jan Lach		Slovakia	ECONOMIC	SOUTH
Ms. Martina Badidova		Slovakia	ENVIRONMENTAL	SOUTH
Sra. Maria José Fernandez-Caballero Quintana		Spain	SOCIAL	NORTH
Mr. Hans Stout		The Netherlands	ECONOMIC	NORTH
Ms. Meriel Robson		United Kingdom	ENVIRONMENTAL	NORTH
Mendocino Redwood Company, LLC	Ms. Sarah Billig	United States	ECONOMIC	NORTH
Mr. Don Finkell		United States	ECONOMIC	NORTH
Mr. Jeff Hunt		United States	ECONOMIC	NORTH
Dr. Ryan Song		United States / Hong Kong, China	ENVIRONMENTAL	NORTH

For information on how to become an FSC member visit [www.fsc.org/become-member.html](http://www.fsc.org/become-member.html).

**If you would like to participate in the General Assembly as a member**, ensure your application is approved on time. Please submit your completed membership application by August 31, 2008. You are welcome to check with us if your documents are complete before you submit them. Please note that applications received after August 31 may not be approved in time for the upcoming General Assembly.

## **FSC BOARD OF DIRECTORS ELECTION 2008** **INTERVIEW CANDIDATES ONLINE**

FSC is offering a question and answer session through an online platform for the FSC Board of Directors election. FSC invites all FSC members to interview their candidates to better understand their aspirations and objectives.

The question and answer session for candidates of the Northern Social chamber will take place from August 4 to 8, 2008. The session for Northern Environmental candidates will follow in late August.

Members can participate in the online question and answer session by logging on to the new membership intranet at [www.fsc.org/login.html](http://www.fsc.org/login.html) using the passwords sent on August 1st. All members, irrespective of their chambers, can then vote until September 15, 2008.

For members who would like to post a message but do not have internet access during the scheduled period please contact Christina Endemann at membership@fsc.org. Those who have not yet received their login information should also contact Ms. Endemann.

## **GLOBAL PAPER FORUM REVEALS DEMAND FOR FSC PAPER IS ON THE RISE**

At the 4th FSC Global Paper Forum, more than 100 participants from the paper production, printing and consumption sectors attested to the growing demand for FSC-labeled paper.



Representatives of companies which manufacture, sell and use paper state their demand on responsible sources in FSC's Global Paper Forum. © FSC

The FSC Global Paper Forum is an international meeting established to strengthen the market and create new opportunities for FSC-labeled paper. This year's forum hosted more than 20 sessions including panel discussions, key notes and workshops at one of the world's biggest paper and printing trade fairs – Drupa, held in Düsseldorf, Germany. The two-day June forum revealed that companies which manufacture, sell and use paper are increasingly demanding that their supplies come from responsible sources.

The trend towards FSC-labeled paper translates directly into new FSC certificates in the supply chain, and back to the forest. In 2007 there was an accelerated growth of 40% in FSC certificates and FSC recently topped the 100 Million hectares mark of certified forest worldwide.

This increase is largely driven by the high recognition of FSC, its values and its impacts through the market and on

the ground. A growing number of companies buying, trading, manufacturing, distributing and promoting FSC products do so because they see FSC as the leading global brand in responsible forest management.

The paper industry is one of the most established sectors in the FSC market. Many large corporations participating in the forum, such as Tetra Pak, Otto or McDonalds Europe, made clear that further commitments to FSC paper and packaging is a priority.

Several significant paper producers at the forum, including Arjo Wiggins, Mondi, and Suzano, revealed that many companies have framed their strategy to support FSC-labeled paper. Businesses appreciate FSC as a corporate solution because the three chamber system evokes a high level of credibility on the market with economical, social and environmental interests equally involved.

Despite a shortage in international paper supply, manufacturers of FSC pulp and paper are in a good position on the world market. There are of course challenges for companies to meet the social, environmental and economic requirements for FSC certification because it often requires implementing considerable improvements. In addition, And creating the supply of certified paper can depend on variables outside of the market. not always be created on the market, as other factors come into play.

The FSC Global Paper Forum is an initiative of the FSC International Center. All four events have been held in Germany with the great support and in collaboration and under the leadership of FSC Germany. The events have been highly successful, and enthusiasm is building for the next forum to be held in the US for the first time, in collaboration with FSC US.

For more information on the forum and to view the full report on the event, please visit [www.writingthefuture.org](http://www.writingthefuture.org).

Source: FSC Germany

## THE THIRD FSC MARKET SURVEY IS CURRENTLY ONLINE

The 2008 FSC market survey is now also available in Italian. The online survey is still open and available in English, Spanish and German. FSC encourages all interested parties to take part.

This year's survey offers certificate holders a space to highlight the most valuable tools needed for their continued success in the market.

Prior surveys have focused on opportunities to address supply chain issues, satisfaction with FSC certification

and results from market recognition. These important aspects are also included in this year's survey.

The survey is primarily aimed at current FSC certificate holders, but is also open for all interested parties. It is currently available in English only and will soon be available in several other languages.

Results of this survey will be the basis for the 2009 Market Info Pack. To view the 2008 Market Info Pack, visit the FSC Facts and Figures section on the FSC website.

Italian: [www.surveymonkey.com/s.aspx?sm=qoA0BUBcMNjavidCM6NaXSw\\_3d\\_3d](http://www.surveymonkey.com/s.aspx?sm=qoA0BUBcMNjavidCM6NaXSw_3d_3d)  
 Spanish: [www.surveymonkey.com/s.aspx?sm=nVUfAJZZill80X\\_2ffZKeyRw\\_3d\\_3d](http://www.surveymonkey.com/s.aspx?sm=nVUfAJZZill80X_2ffZKeyRw_3d_3d)  
 German: [www.surveymonkey.com/s.aspx?sm=3EOyyjivxaZ\\_2baqGGAjPZqw\\_3d\\_3d](http://www.surveymonkey.com/s.aspx?sm=3EOyyjivxaZ_2baqGGAjPZqw_3d_3d)  
 English: [www.surveymonkey.com/s.aspx?sm=PaeknQ3ALE5zsU8nZRvLqA\\_3d\\_3d](http://www.surveymonkey.com/s.aspx?sm=PaeknQ3ALE5zsU8nZRvLqA_3d_3d)

## MORE INFORMATION ON CERTIFICATE HOLDERS NOW ONLINE

The FSC online certificate database now offers further information for those seeking to learn more about FSC certificates.

The new features are part of a series of improvements that FSC is implementing throughout 2008 and 2009. They will help profile and promote certificate holders, as well as make information on forest management certificates more easily accessible.

Additional information now includes:

- ✓ Multi-site certificates now include the locations and contact details of each site.
- ✓ Group certificates show the individual group members and contact details.
- ✓ Additional information includes which FSC labels are available in combination with a detailed product list.
- ✓ Public summaries for forest management certificates will begin to be included in the FSC certificate database. (Note: these will be added over the next months; currently these reports are available on the website of each certification body.)

These newly added features bring another level of transparency to the certification process by providing readily available information on the validity of certificates and certified products.

The FSC certificate database is the only up to date information listing for any FSC certificate – please be sure to use it to find providers of certified products, information about certificate holders and view public summaries of forest management assessments – [www.fsc-info.org](http://www.fsc-info.org).



CB code	Category	CW	Number	Certificate Holder	Group Member
SA	COC		001944	Hangzhou Light Industrial Products, Arts&Crafts, Textiles I/E Co., Ltd.	
SW	COC		001261	Landscape Forms	
SA	COC		001636	SC Jacob Forest SRL	
SA	COC		1467	Savern Green Countryside Trust	

The certificate database is the only up to date information listing for any FSC certificate. The information profiles and promotes each certificate holder. © FSC

If there is any missing or incorrect information for any certificate, please inform the FSC accredited certification body who issued the certificate. Because the details of the certificate are verified by the certification body, they are responsible for maintaining and updating this information. The contact details of all FSC accredited certification bodies are available at the website of Accreditation Services International (ASI), the company managing the FSC accreditation program and monitoring the performance of FSC accredited certification bodies.

## SPACE TECHNOLOGY OFFERS COST EFFECTIVE SERVICES FOR FSC FOREST MANAGEMENT

Today's view on our planet from space is the clearest ever – land cover changes such as forest fires and concession roads can be easily detected with the latest Earth Observation (EO) technologies.

A project of FSC, the European Space Agency (ESA) and several partners shows how the latest EO technology improves its potential as a cost effective tool for forest management certification (Table 1).

EO experts mapped, measured or monitored FSC certified forests in the following three countries during the two year long project: York Timber Organization in South Africa; Congolaise Industrielle des Bois in the Republic of Congo; and Grupo Orsa in Brazil.

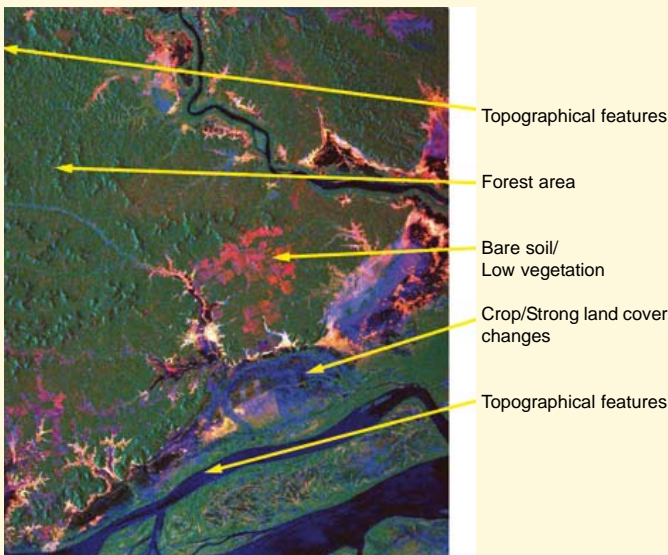


Image 1. Land classification map showing the nature and spatial using distribution of land use change. © Sarmap

The results present EO as practical across a range of services including the documentation of land change cover between two dates making even negative impacts visible (Table 2). The new data is a source of valuable information for FSC certificate holders to show their compliance with FSC's Principles and Criteria over time as well as with national regulations.

The EO maps illustrate areas of deforestation and fire breaks as well as agriculture, rivers and flooded vegetation (Image 1). Furthermore, experts were able to estimate timber volumes in a plantation and areas which were destroyed by fire and later successfully re-established (Image 3). With this EO technology it was even possible to detect and map concession roads as an indicator of deforestation risk or project accessibility.

For the study the specialists combined the latest generation of low cost, high resolution satellite imagery with complementary data mapping of radar and optical sensors within a Geographical Information System's (GIS) framework (Image 2).

Resolution	Mapped Area / KM <sup>2</sup>	Cost Range / KM <sup>2</sup>	
		Land Classification	and Use Change Analysis
Low	~50'000	~0.10 – 0.25	~0.30 – 0.50
High	~5'000	~1.75 – 2.00	~3 – 5
Very high	~100	~80 – 100	~130 – 200

Table 1. Estimated costs, includes service design, data processing and mapping, interpretation and analysis. © Eyre Consulting

FSC certified forest companies with GIS capabilities can seamlessly integrate those large scale maps into their operations. "Thus they save considerable cost and time compared to conventional ground-based forest surveys", says Justin Butler, Chief Executive Officer of Ambiental. Francesco Holecz, Chief Executive Officer of Sarmap SA, comments: "This also ensures that forest product maps and measurements are totally unbiased and independent. And, once ground verified, reliable."

FSC Criteria 10.5 in plantations for example, requires the restoration or maintenance of a proportion of the overall forest management area as natural forest cover. EO analysis could help FSC certification bodies to evaluate and monitor compliance with FSC requirements regarding set aside areas based on up-to-date and easy assessable land cover maps and EO information.

The three companies participating in the project confirmed that the EO services provided valuable support for forest management decisions. The additional or alternative data source helped to make decisions and to address specific management issues such as fire damage and assessment of burned areas. The impact of decisions over time can also be monitored and easily verified by FSC certification bodies.

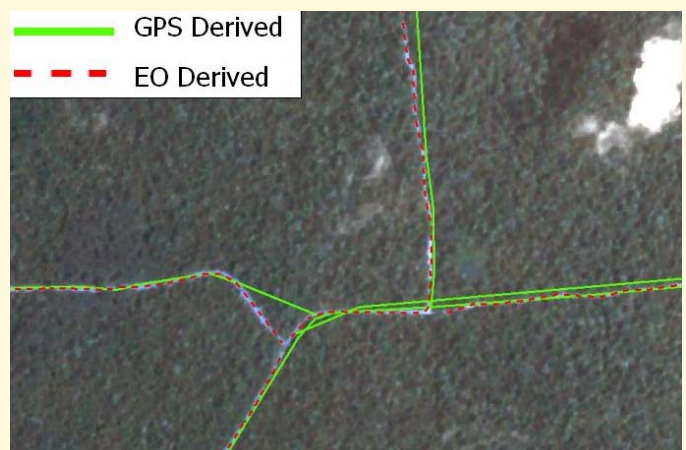


Image 2. Improved accuracy of GPS road detection (green line) by EO derived data and processes (dotted line) © Sarmap

... continued on page 7

**SPACE TECHNOLOGY OFFERS COST EFFECTIVE SERVICES CONT...**

Mapping and monitoring scope	Resolution		
	Low (250 – 100m)	High (50 – 20m)	Very high (5 – 1m)
Roads	none	main roads	dirt roads
Rivers	main rivers	rivers with potential for timber transport	rivers with potential and evidence for timber transport
Clear felling / ha	>400	>3 – 5	>0.5 – 1
Forests degradation / % canopy loss	none	>50	>20
Forest loss	hot spot fire detection	land use change	detailed land use change
Habitation	town	villages	houses
Map scale	>1:1'000'000	1:100'000 – 50'000	1:25'000 – 10'000

Table 2. Information available at different resolutions. © Eyre Consulting

As such, for FSC certification the new EO technology could be seen as a reliable, independent, comprehensive and detailed source of information on forest operations and certification. Francesco Holecz, concludes: "Successful integration of EO services in responsible forest management will depend on our ability to provide relevant and cost effective mapping and monitoring services. The key to this is providing customized products and automated data analysis processes which speed up service delivery, limit operator bias and error and reduce processing costs."

The project partners include Sarmap, Ambiantal Technical Solutions, Aon Ltd and Eyre Consulting, and the European Space Agency (ESA) that financed the project.

FSC and the project partners are planning to share these results at the upcoming FSC General Assembly. Further information about this and other events at the General Assembly are coming soon. For further information on this project contact Charles Crosthwaite Eyre, Managing Director of Eyre Consulting.

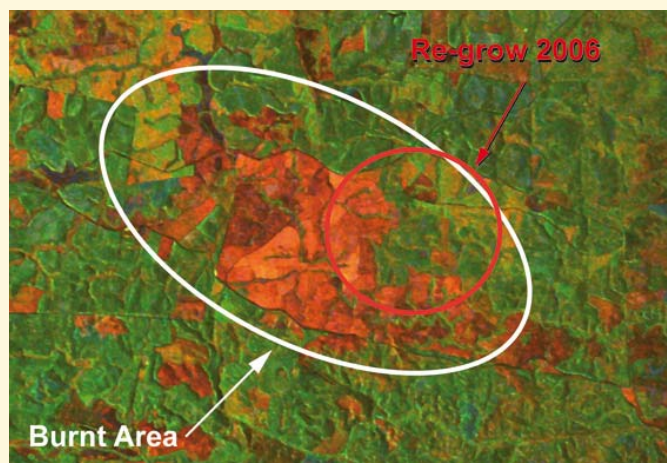


Image 3. The radar image (ALOS Palsar) in 2006 confirms plantation re-establishment of burnt area from 2003. © Sarmap

**RESOURCE SECTION**

Updates on FSC figures and charts – FSC maps and data: [www.fsc.org/facts-figures.html](http://www.fsc.org/facts-figures.html)

FSC membership list:  
[www.fsc.org/membership\\_documents.html](http://www.fsc.org/membership_documents.html)

FSC National Initiatives contact details:  
[www.fsc.org/worldwide\\_locations.html](http://www.fsc.org/worldwide_locations.html)

FSC certificate database: [www.fsc-info.org](http://www.fsc-info.org)

**Upcoming Events:**

FSC General Assembly (November 2008):  
[www.fsc.org/general-assembly-2008.html](http://www.fsc.org/general-assembly-2008.html)

**Publications:**

Global forests statistics: UN FAO State of the World's forests 2007: [www.fao.org](http://www.fao.org)

WWF Guide to Bying Eco Friendly Paper:  
[www.panda.org/paper/toolbox](http://www.panda.org/paper/toolbox)